

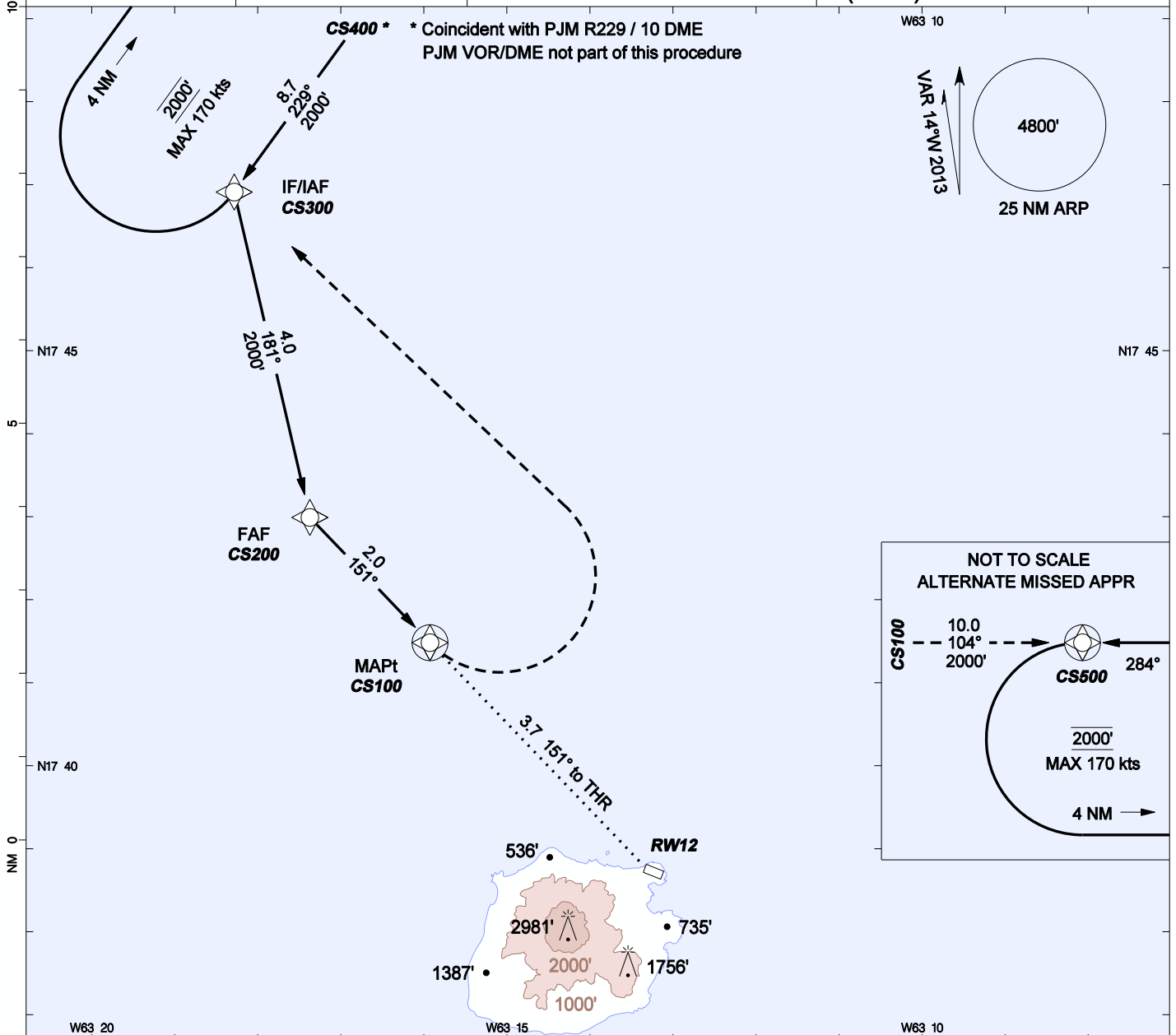
AIP DUTCH CARIBBEAN

INSTRUMENT  
APPROACH  
CHART- ICAO

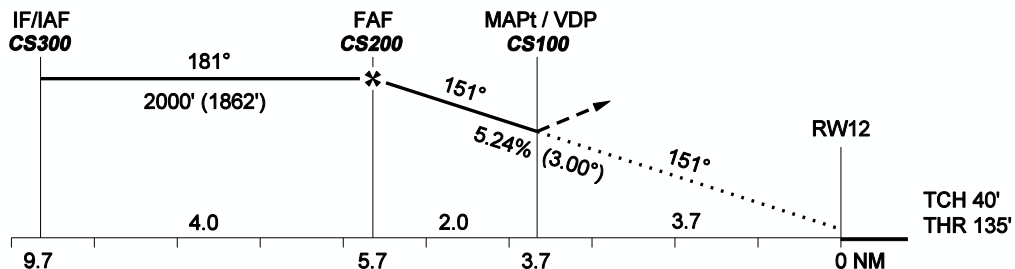
AD ELEVATION: 138'  
TRANS LEVEL: FL65  
TRANS ALT: 5000'

JULIANA APPR 128.95 (PRIMARY)  
JULIANA TWR 118.7 (SECONDARY)  
SABA AFIS 118.25

RNAV (GNSS) RWY 12  
JUANCHO YRAUSQUIN APT  
(TNCS) SABA



MISSED APPR: Climbing left turn to 2000' direct CS300 and hold.  
ALT MISSED APPR BY ATC: Climbing left turn to 2000' direct CS500 and hold.  
MISSED APPROACH WITH COMM FAILURE: From holding pattern, proceed to TNCM, execute available approach.



	OCA(H)		GROUNDSPEED - DESCENT RATE					
	A	B	KNOTS		FT/MIN			
LNAV	1350' (1212')	1350' (1212')	70	90	100	120	140	160
Circling north side only	1350' (1212')	1350' (1212')	372	478	531	637	743	849

CHANGES: New procedure.

1. Caution: Observe published wind speed limitations.
2. GNSS required. DME/DME not authorized.
3. Visual descent point (VDP) is where LNAV OCA intersects 3° descent slope.
4. Bearings are magnetic, altitudes and elevation in feet, heights are relative to AD elevation, distance in NM.

- Fly-over on demand reporting wpt
- Fly-by on demand reporting wpt